

Next steps for Enfield Local Plan

November 2020

Striving for excellence



www.enfield.gov.uk



Contents

Where are we now?

- The story so far
- Implications of contextual changes

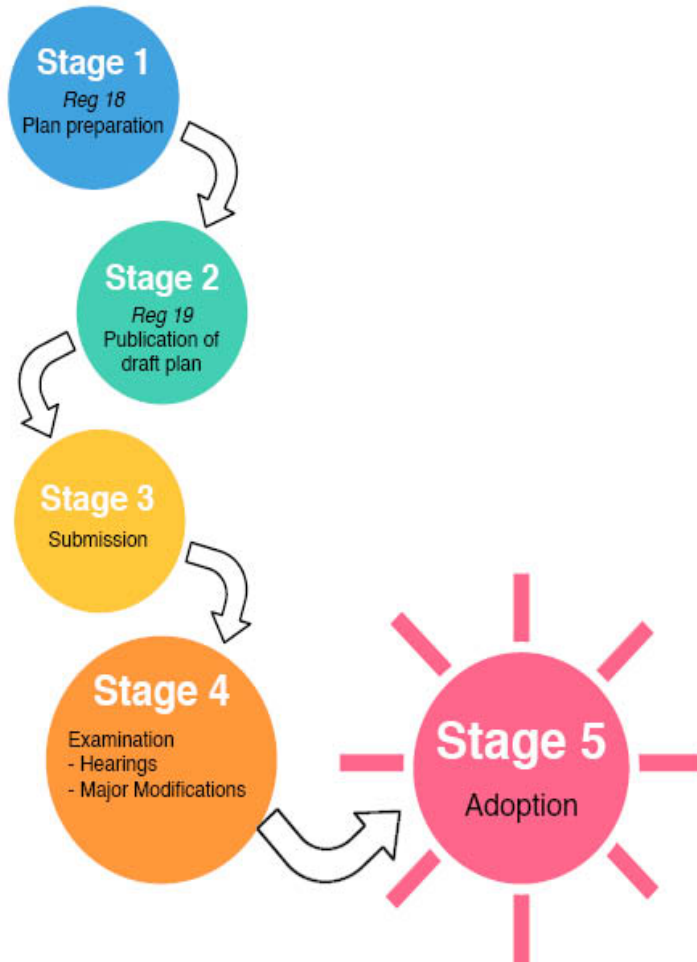
Where do we want to get to?

- Our spatial vision
- A sound plan

How are we going to get there?

- What the next stage local plan will contain
- The Forward Programme

The story so far



Enfield has an adopted, but out of dated Local Plan

It needs to prepare a new plan.
Work on this commenced in 2015.

Enfield is currently at the plan preparation stage known as Reg 18.

Work done so far :

- 2015 consultation
- The Big Enfield Conversation 2017
- 2018 Issues and Options consultation
- Raft of evidence base work

Implications of recent major contextual changes

Plans must be based on assessments of context, evidence and a powerful local vision.

Since 2018 there have been a number of significant contextual changes to the plan making environment:

- Climate change emergency declaration
- COVID-19
- Brexit
- Recent & proposed changes to the planning system
- Growing importance of nature recovery agendas (including re-wilding)
- Stalemate with publishing the London Plan
- Technological advancements
- Financial and resourcing pressures
- Deepening of housing and health crisis



Implications of the contextual changes

Impacts of major contextual shifts for Enfield plan making:

- Need to quickly reflect and reset to ensure we take the right next steps
- Need to make sure we have got the following right:
 - Spatial vision
 - Form of plan
 - Content of plan especially
 - Spatial options
 - Strategic options
 - Evidence that underpins the plan
 - Plan preparation timetable

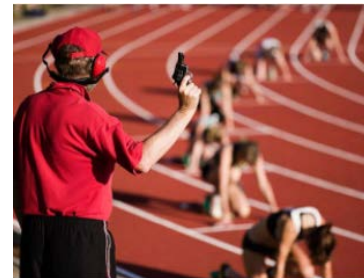
Where we are now

What has been happening over last few months?

- Detailed review of LP content and programming in light of contextual changes. Included:
 - Reflection on implications of proposed Govt changes for ELP scope and preparation processes.
 - Consideration of effects of contextual changes on Enfield's future how this might impact on plan making
 - Checking and testing the soundness of approach to date in light of changes
- Updating of evidence base to reflect changes
- Managing cost of LP preparation process

Where are we now?

- What we are proposing to put in place:
 - An updated and detailed plan preparation programme
 - Updated LDS – new timetable
 - An updated SCI
 - Member engagement programme
 - Specific dates for Member consideration of next stage of local plan
- Waiting for approval and sign-off of the LDS



Ready and excited to begin the next steps of the Enfield plan preparation

Where do we want to get to?

- A plan with a clear and enthusing spatial vision of what we want Enfield to be in 15/20 years
- An updated vision, taking into account recent contextual changes that sets out:
 - What type of Place we want Enfield to be in 2036?
 - Potential key themes – Greening, equality, addressing poverty, wellbeing, nature recovery, design and place quality, affordability, housing, education, jobs and skills
 - Potential details - Greening, climate change, growing importance of biodiversity and nature recovery, rural and urban place making, changes to retail and employment centres, spatial inequality, permeability and connectivity, housing and affordability.
- Development of spatial options and policies to reflect the ambitions of the updated Vision



How will we get there?

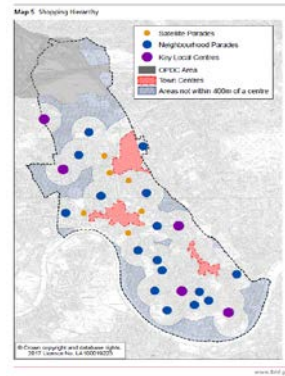
The next stage local plan will contain:

- Vision & Objectives
- Key diagram expressing the Spatial Strategy (where development and growth will be located)
- Strategic options – discounted options – preferred option
- Strategic policies covering key cross cutting themes such as the Spatial Strategy, Sustainability, Housing, Employment, Placemaking, Design, Climate Change, Biodiversity, Green and Blue Infrastructure, Nature recovery and Infrastructure
- Place Specific / Area Based policies – bespoke policies for specific places
- More detailed topic policies used by DM covering design, housing, employment, rural, environmental and other detailed matters
- Monitoring
- Site allocations – more specific development parameter for individual sites
- Planning Policies Map

What the next stage local plan will look like

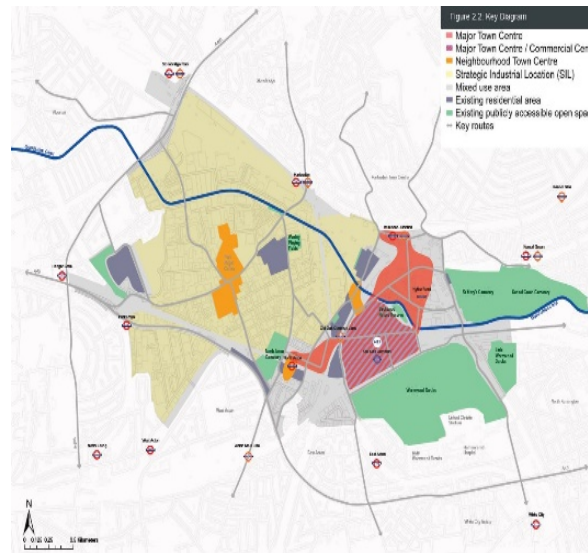
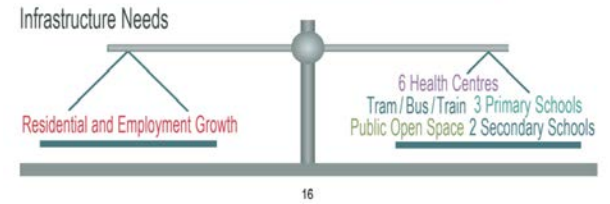
- Be highly graphic and communicative
- Be map based as far as possible with Policies Map, Vision Concept Plan and Key Diagram forming the heart of the plan
- Using masterplans, localised concept plans, maps, photographs and info graphics to help people visualise the detail

What the next stage local plan will look like



Land Employment Forecast	Floorspace Office Forecast	Floorspace Food / Drink Forecast	Floorspace Retail Forecast
10 additional hectares	23,000 additional gross m ²	10,000 additional gross m ²	39,000 additional gross m ²

*SMA Strategic Housing Market Area
*SHELAA Strategic Housing and Economic Land Availability Assessment



London Borough of Bromley Envisors

Mottingham Chislehurst St Mary Cray
Penge Beckenham BROMLEY Pats Wood
West Wickham Hea Ovington
Biggin Hill

Main window
This image shows the Proposals Maps at the largest scale - navigate precisely using the arrow buttons. To move larger distances it is recommended that the user navigates using either of the locator maps on the right.

Locator 1
This thumbnail image shows the London Borough of Bromley area. Click anywhere on this image to move quickly around the Proposals Map - the main window will update, as will the blue circle indicating your position within Bromley.

Reproduced from Ordnance Survey mapping with the permission of the Controller of H.M. Stationery Office. © Crown copyright. Unauthorised reproduction infringes Crown copyright and may lead to prosecution or Civil Proceedings.
London Borough of Bromley, Licence: 100017001, 2007

The proposed forward programme

- Preparation of draft plan November to April 2021
- Draft Plan to Full council – June 2021
- Reg 18 Draft Plan consulted on June – July 2021
- This will be good detailed draft. Community influence
- Preparation of Reg 19 publication Plan 21/22
- Reg 19 Plan Publication 2022
- Submission of draft plan to SoS 2022
- Examination from Autumn 2022/23
- Adoption in 2023/2024

Reg 18 Draft Plan proposed forward programme



Key evidence base updates completed
End of December 2020



Vision updating, spatial option generating, and site selection
Jan – Mar 2020



Series of Member workshops and involvement in plan development
Jan – Mar 2021



Focussed community engagement
Jan to March 2021



Preparation and testing of draft plan policies
Jan – April 2021



Plan to Full council
June 2021



Reg 18 draft Plan consulted on June – July 2021

Reg 18 draft Plan - Proposed Member engagement

Decision making

- Work with Informal Cabinet on Vision, site allocations, spatial strategy – Jan to April 21
- Review by Regeneration and Economic Development Scrutiny Committee – May 21
- Full council approval to consult – June 21

Member engagement

- Focussed engagement through workshops in late Jan to March 21.
- Workshops to be cross party and open for all Members to attend.
- Will be private and confidential events